

# Equal and needs-based services for older people – RAI assessment training model

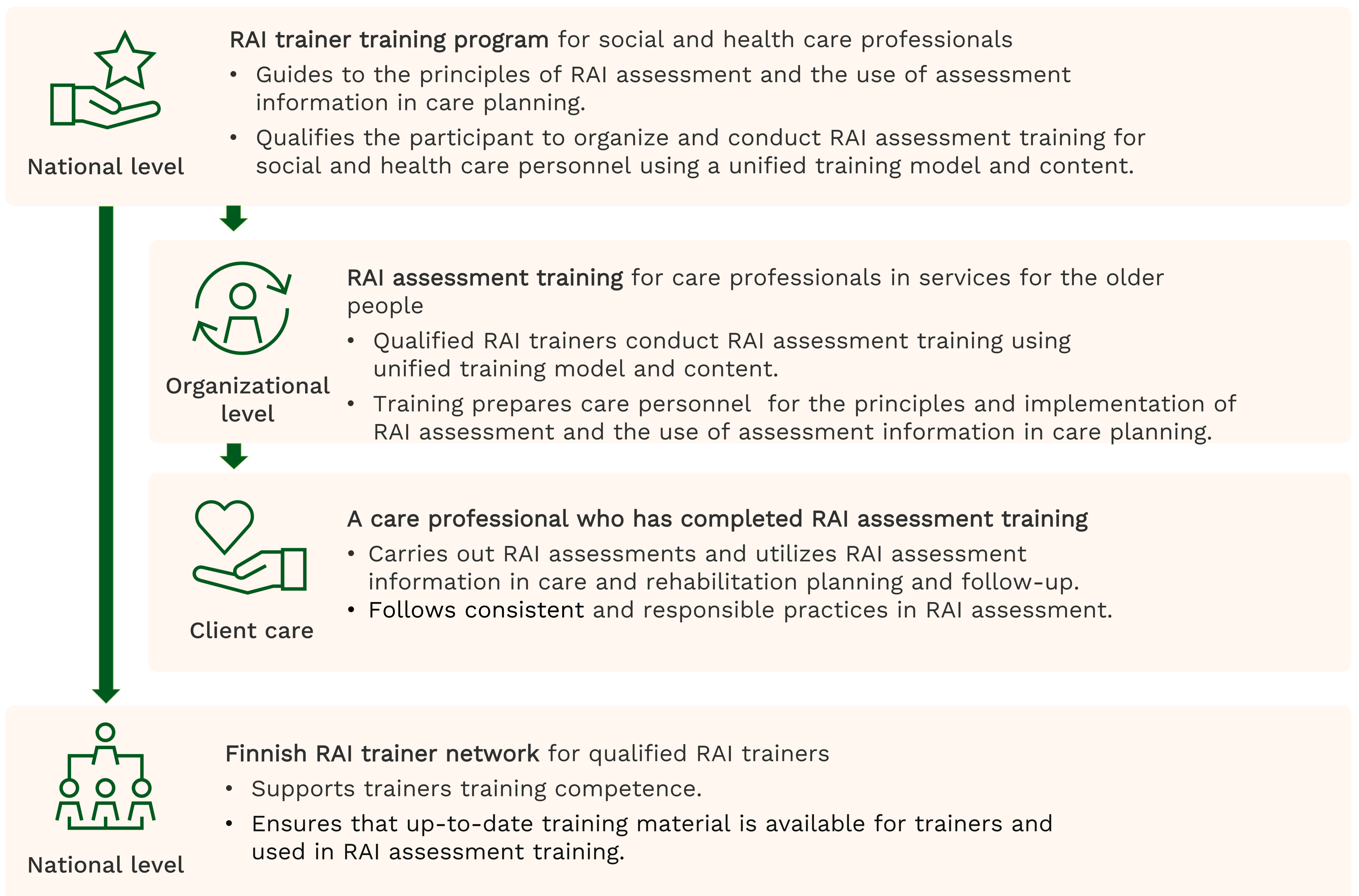
## Finnish RAI assessment training model

- Promotes unified RAI (Resident Assessment Instrument) competence among social and health care professionals.
- Ensures consistent and reliable practices in RAI assessment and use of RAI assessment information.
- Was developed to support the national deployment of RAI in social services for older people in Finland.

## RAI – Resident Assessment Instrument

- Standardized system for assessing service needs and preparing a care, rehabilitation and service plan.
- RAI assessment information supports the care professionals decision-making process.
- Developed and maintained by interRAI, an international network of researchers.

## Finnish RAI assessment training model



”Better assessment, better care, better outcomes”